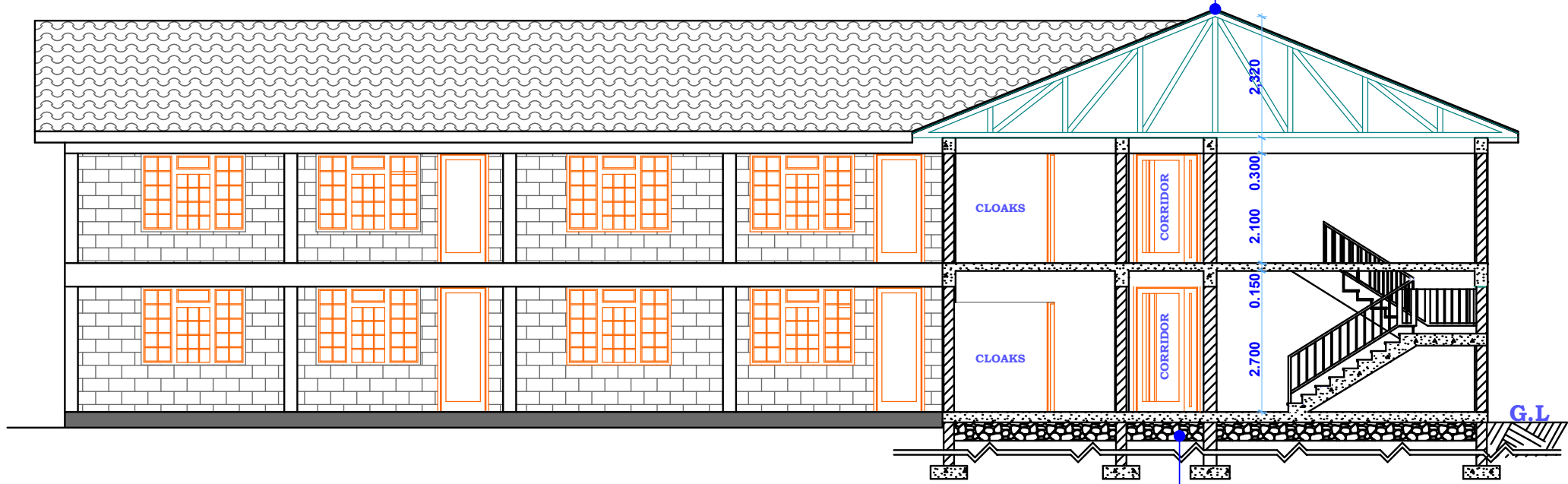


ROOF DETAILS

- 27° ROOF PITCH
- 30G PREPAINTED RIDGE CAPS ON
- 30G PREPAINTED GALL SHEET ON
- 150x50 mm RAFTERS AND 75x50mm PURLINS ON
- 150x50 mm TIE BEAM, KINGPOST ON
- 100x50 mm WALL PLATES, STRUTS & TIES ON
- 75x50 mm CEILING JOISTS
- 50x50 mm BRANDING AT 600mm C/C
- 9mm THIK CHIPBOARD CEILING



SECTION X/X

- 150mm high screed skirting
- 500g. polythene dpm.
- 150mm conc. slab
- 50mm murrum blinding
- 350mm hardcore filling
- 600x200mm r.c fdn. strip (to stuct.eng. det.)